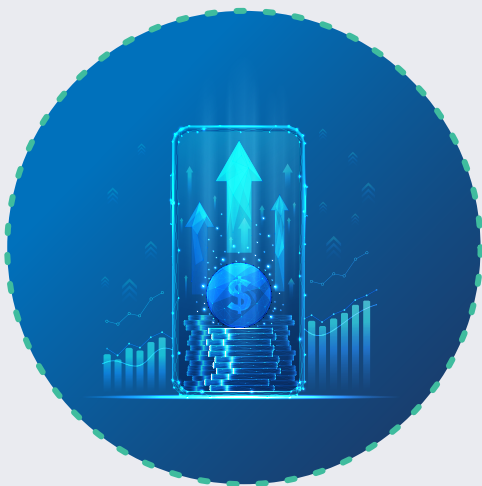


# RTP® NETWORK BY THE NUMBERS

Jan. 1 - Mar. 31, 2025

Data reflects the 78 credit unions that Corporate One has connected to the RTP network



## GROWTH ON THE RISE

RTP transactions climbed steadily in the first quarter of 2025, increasing 44%.

Real-Time Payments Volume and Dollars



## BUSINESSES DRIVING THE FUTURE

**\$137.4**  
MILLION

Amount that businesses sent via the RTP network, representing 88 percent of the value.

**\$18.3**  
MILLION

Amount consumers sent via the RTP network.



## OFF THE CLOCK<sup>1</sup>



**55%**

OF RTP TRANSACTIONS happen outside of regular business hours.

**24%**

OF RTP TRANSACTIONS occurred on Saturdays and Sundays.

## THE IMPACT OF IMMEDIACY

**\$598.49**

Average amount businesses and consumers sent via the RTP network, an increase of 38% from the 2024 average.

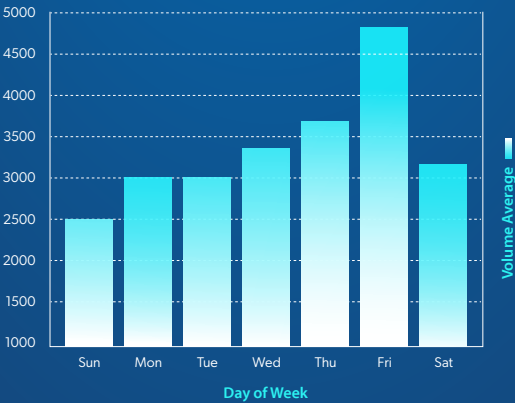
### Who's Sending Real-Time Payments?

Top 5 senders to Corporate One members:

1. **venmo**
2. **Square**
3. **dailypay.**
4. **PayPal**
5. **EMPOWER**

### Most Popular Days of the Week for Sending RTP Transactions

Average Number of RTP Transactions Per Day



### Joining the Movement: Who connected to the RTP network in Q1?

Corporate One is excited to have **connected 11 new credit unions** to the RTP network in Q1 of 2025—**bringing our total to 78 credit unions.**

Corporate One has connected approximately **26 percent** of all credit unions currently connected to the RTP network.

## EMPOWER YOUR MEMBERS

Corporate One is also facilitating connections to the FedNow® Service. This year, we have successfully onboarded two new credit unions, increasing the total number of member credit unions we've connected to the FedNow Service to nine. Additionally, we are planning to unveil a FedNow Service by the Numbers infographic later in 2025.

Credit unions across the country are recognizing the power of real-time payments. Corporate One is ready to help your credit union join the RTP network and FedNow Service.



<sup>1</sup>Statistics based on Eastern Standard Time. All weekend transactions are considered after-hours.

CONTACT US TODAY AT  
**HELLO@CORPORATEONE.COOP**

TO LEARN MORE ABOUT HOW YOUR CREDIT UNION CAN EMBRACE THE POWER OF REAL-TIME PAYMENTS.

Corporate**One**